

MANHOLE / CATCH BASIN	TOP LID	INVERT	DIRECTION
MH #1	359.790	357.39	Sty
MH #2	359.887	355.98	Nty
MH #3	359.843	356.72	Sty
MH #4	360.651	357.25	Nty
MH #5	360.190	357.03	Nty
MH #6	361.030	358.97	Nty
MH #7	360.482	358.60	Nty
MH #8	361.620	358.58	Nty
MH #9	361.788	359.47	Nty
MH #10	360.479	359.01	Sty
MH #11	361.580	360.15	Nty
MH #12	361.771	358.61	Nty
MH #13 (DROP PIPE)	361.747	359.50	Sty
MH #14	361.578	359.01	Sty
MH #15	361.643	359.75	Sty
MH #16	361.918	359.45	Sty
MH #17	361.721	359.45	Sty
MH #18	362.070	359.75	Sty
MH #19	362.395	359.75	Sty
MH #20	362.218	359.15	Sty
MH #21	361.772	358.17	Sty
MH #22	361.986	358.98	Nty
MH #23	361.584	358.81	Nty
MH #24	360.757	358.59	Sty

MANHOLE / CATCH BASIN	TOP LID	INVERT	DIRECTION
MH #25	361.271	358.63	Nty
MH #26	361.304	358.33	Sty
MH #27	360.729	358.32	Sty
CB #28	361.224	359.13	Nty
CB #29	361.448	360.87	Nty
CB #30	361.443	360.13	Nty
CB #31	361.007	359.68	SWty
CB #32	360.983	359.78	SWty
MH #33	362.978	359.05	Nty
MH #34	362.234	361.31	Nty
MH #35	362.535	358.99	Sty
MH #36	362.214	360.51	Nty
CB #37 (SOUTH HAZ. DEVICE)	362.090	361.09	SWty
CB #38	361.948	360.95	Wty
CB #39	362.440	360.94	Nty
CB #40	361.670	360.55	Sty
CB #41	360.715	359.83	Nty
CB #42	360.748	358.27	Sty
CB #43	361.282	358.55	Nty
CB #44	361.492	360.20	SEty
CB #45	361.515	360.54	Nty
CB #46	359.128	357.77	Nty
CB #47	359.219	357.97	Nty
CB #48	358.271	357.25	Nty
CB #49	359.426	358.55	Nty
CB #50	362.207	360.55	Sty
CB #51	362.128	360.08	Nty
CB #52	361.769	360.57	Sty
CB #53	361.753	360.64	Nty
MH #54	362.988	360.14	Nty
MH #55	362.702	359.73	Nty
MH #56	363.175	361.02	SEty
CB #57	361.579	360.29	NEty
CB #58	361.369	360.51	Sty
MH #59	361.888	358.94	Nty & Sty
MH #60	361.721	359.57	Sty
MH #61	362.128	CANNOT OPEN	

MANHOLE / CATCH BASIN	TOP LID	INVERT	DIRECTION
MH #62	361.158	MORE THAN 100m @ 4.6	
CB #64	361.201	360.15	Nty
MH #65	361.387	358.97	Nty
MH #66	361.309	358.40	Nty
CB #67	361.755	360.44	COVERED WITH SAND
CB #68	361.789	361.27	NEty
CB #69	361.906	360.19	NEty
CB #70	361.743	361.04	Nty
CB #71	361.716	BLKCKED BY CAR	
CB #72	361.729	361.03	Wty
CB #73	361.805	361.16	Sty
CB #74	359.703	358.52	SWty
CB #75	359.704	358.34	NEty
MH #76	361.912	359.31	Sty
MH #77	360.406	357.86	Nty
CB #78	360.166	359.94	Sty
DRAIN #79	360.686	359.94	Sty
MH #80	362.142	ELECTRICAL	

LEGEND:

- x 353.53 DENOTES EXISTING SURFACE ELEVATION
- x (353.53) DENOTES EXISTING TUNNEL FLOOR ELEVATION
- B- DENOTES UNDERGROUND BELL WIRES
- C- DENOTES UNDERGROUND CABLE TV WIRES
- B/C- DENOTES UNDERGROUND BELL & CABLE TV WIRES IN SAME TRENCH
- E- DENOTES UNDERGROUND ELECTRICAL WIRES
- G- DENOTES GAS MAIN
- O- DENOTES UNDERGROUND OXYGEN LINE
- S- DENOTES AERIAL HYDRO WIRES
- SA- DENOTES SANITARY SEWER
- ST- DENOTES STORM SEWER
- W- DENOTES WATERMAIN
- HP DENOTES HYDRO POLE
- CB DENOTES CATCH BASIN
- MH DENOTES MANHOLE

TOPOGRAPHICAL SKETCH
OF PART OF
LOT 3, CONCESSION 1
(GEOGRAPHIC TOWNSHIP OF DOWNIE)
(STRATFORD GENERAL HOSPITAL)
IN THE
CITY OF STRATFORD
COUNTY OF PERTH

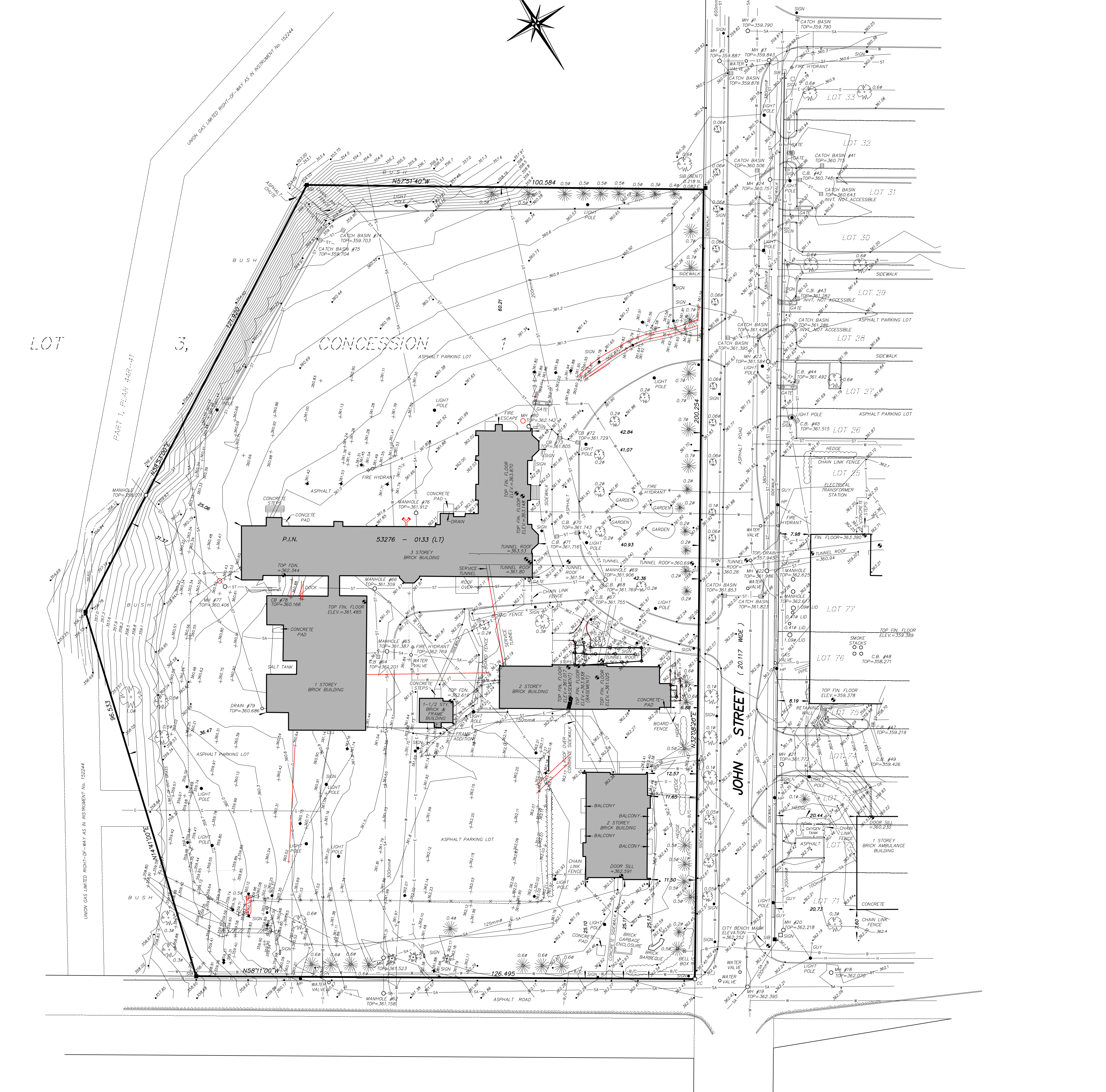
SCALE 1:500
0 2 4 8 10 20 30 METRES

MTE OLS
ONTARIO LAND SURVEYORS

METRIC: DISTANCES SHOWN ON THIS PLAN ARE IN METRES AND CAN BE CONVERTED TO FEET BY DIVIDING BY 0.3048.

NOTES:

- 1) BEARINGS AND DISTANCES AND GRADE INFORMATION SHOWN HEREON WERE DERIVED FROM FIELD DIMENSIONS TAKEN JULY 28, 2004.
- 2) UNDERGROUND WATER AND SEWER INFORMATION WAS DERIVED FROM CITY OF STRATFORD ENGINEERING DEPARTMENT RECORDS. CRITICAL INVERT ELEVATIONS SHOULD BE CONFIRMED PRIOR TO CONSTRUCTION.
- 3) UNDERGROUND UTILITIES WERE LOCATED BY THEIR RESPECTIVE UTILITY COMPANIES ARE APPROXIMATE. UNDERGROUND UTILITY LOCATIONS SHOULD BE VERIFIED PRIOR TO CONSTRUCTION.
- 4) TOP OF TUNNEL ELEVATIONS ARE ON THE CEILING ON THE INSIDE OF THE TUNNEL.
- 5) ROGERS CABLE WERE NOT ABLE TO LOCATE THEIR LINES BETWEEN THE BUILDING. DIG WITH CAUTION.



BENCH MARK:

ELEVATIONS ARE REFERRED TO CITY OF STRATFORD BENCH MARK NO. 09B20020031 BEING A CAP LOCATED ON THE NORTH EAST CORNER OF THE INTERSECTION OF WEST GORE STREET AND ST. VINCENT STREET.
ELEVATION = 361.813m (GEOIDETIC)

CAUTION:

THIS IS NOT A PLAN OF SURVEY AND SHALL NOT BE USED EXCEPT FOR THE PURPOSES INDICATED IN THE TITLE BLOCK.

THIS SKETCH IS NOT VALID UNLESS IT IS AN EMBOSSED ORIGINAL COPY ISSUED BY THE SURVEYOR

REVISED NOVEMBER 13, 2018
THIS SKETCH PREPARED FOR HURON PERTH HEALTHCARE ALLIANCE



ONTARIO LAND SURVEYORS
365 HOME STREET
STRATFORD, ONTARIO, N5A 2A5
TEL: (519) 271-7952 FAX: (519) 271-3545

© COPYRIGHT 2018, MTE OLS LTD.
Cad File: P:\P\353531\100\35353-100-14.dwg CADD: 35353-100.dwg
Drawn By: JFL/MJM Checked By: T. McNEIL O.L.S. File No: 35353-100-14 (L)